

Discrete Total – WW & Regions

CONTENTS:

- 1. Worldwide Shipments - \$ & Units**
- 2. Worldwide Growth Rate - \$ vs Units**
- 3. Regions Shipments - \$**
- 4. Regions Shipments - Units**
- 5. Regions Growth Rate - \$**
- 6. Regions Growth Rate – Units**
- 7. Worldwide ASP**
- 8. Regions ASP**
- 9. Table – Current Stats & Growth Rates**

Market data analysis based on WSTS data.

Finer Granularity Sub-Categories Available

- Fee-Based -

See following page for more information

Market Statistics #10

Fee-Based

Discrete Sub-Categories:

- 1. Diodes**
 - 1.1. Small Signal Diodes**
 - 1.2. Zener Diodes**
 - 1.3. Transient Protection Devices**
 - 1.4. RF & Microwave Diodes**

- 2. Small Signal and Switching Transistors**
 - 2.1. Bipolar Small Signal**
 - 2.2. Field Effect**
 - 2.3. RF & Microwave SS**

- 3. Power Transistors**
 - 3.1. RF & Microwave**
 - 3.2. RF & MW Power Transistor Modules**
 - 3.3. Bipolar General Purpose**
 - 3.4. Bipolar General Purpose Modules**
 - 3.5. Field Effect General Purpose**
 - 3.5.1. Low Voltage**
 - 3.5.2. High Voltage**
 - 3.6. Field Effect General Purpose Modules**
 - 3.7. Insulated Gate Bipolar Transistors**
 - 3.8. Insulated Gate Bipolar Transistors Modules**

- 4. Rectifiers**
 - 4.1. 0.5 – 3.0 AMPS**
 - 4.2. 3.1 – 35 AMPS**
 - 4.3. Above 35 AMPS**

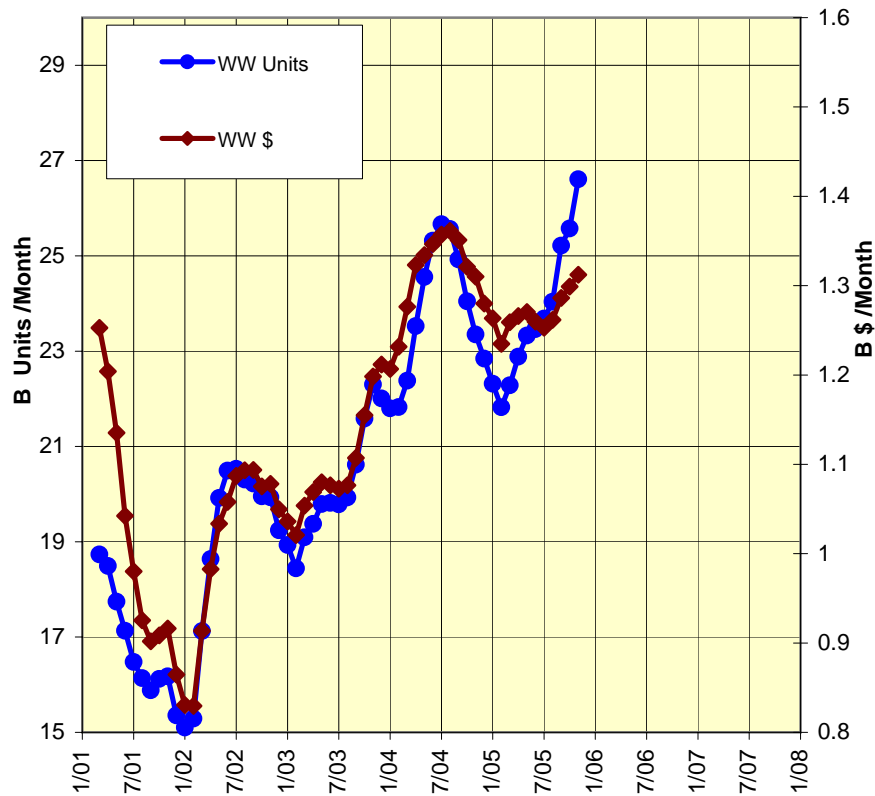
- 5. Thyristors**
 - 5.1.0 – 55 AMPS**
 - 5.2. Above 55 AMPS**

Sub-Categories include regional \$ breakdown. Sub-sub categories include Worldwide \$, Units and ASP.

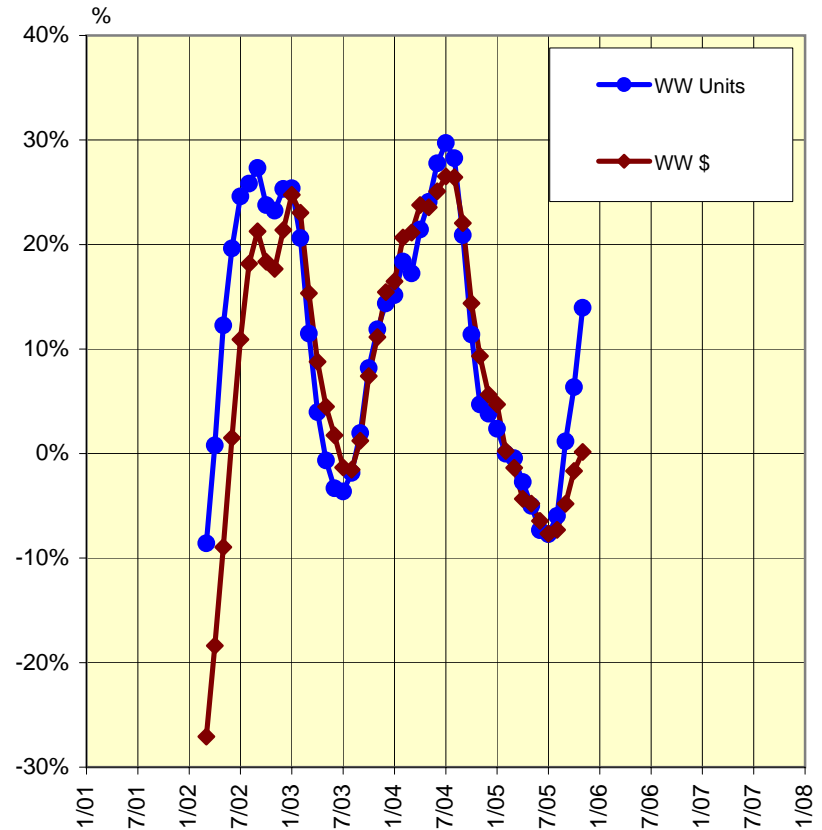
Annual Fee: \$300 per Sub-Category

Vol. XIX, No. 12 – January 2006

1. Discrete Total - WW Shipments - \$ & Units

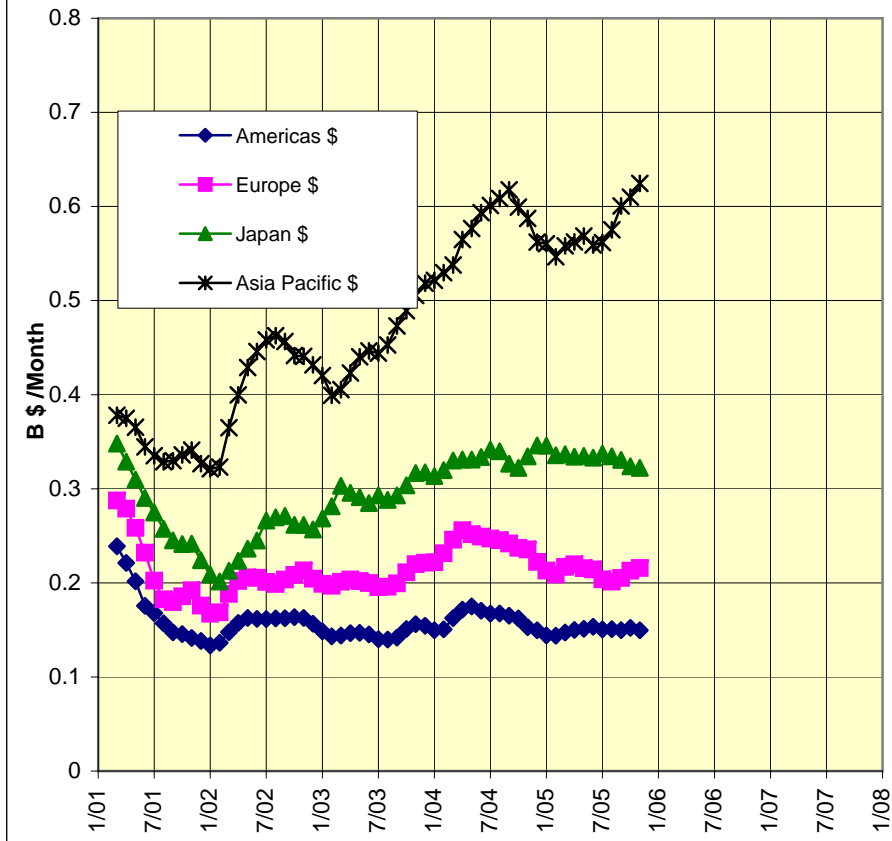


2. Discrete Total - WW Growth Rate - \$ vs Units

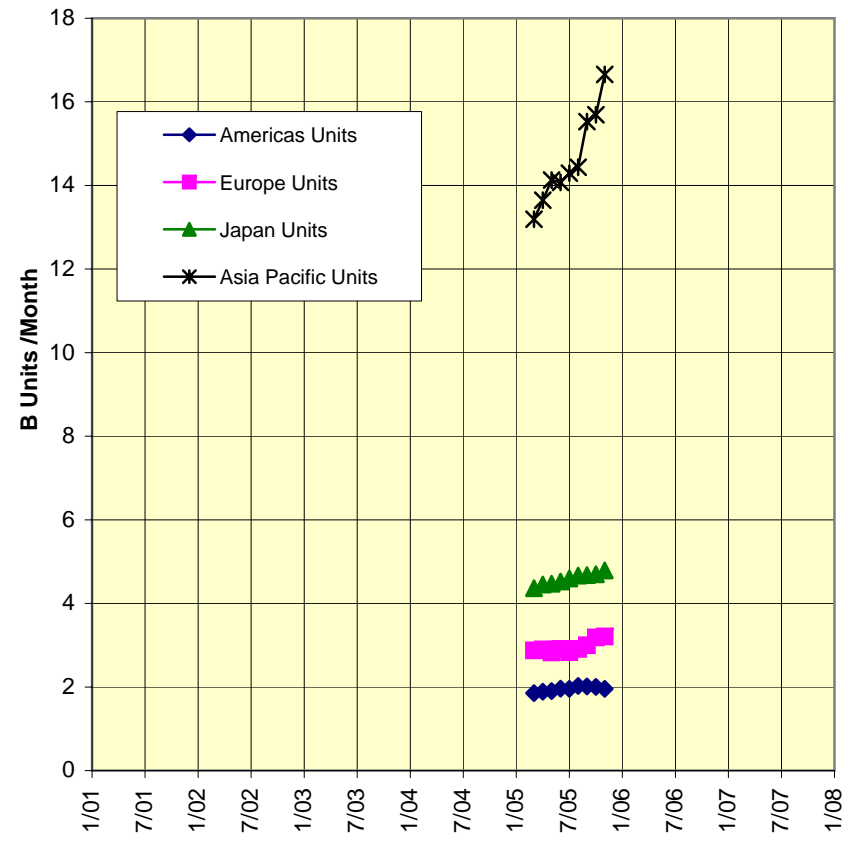


Source: Analyses by Advanced Forecasting Inc.

3. Discrete Total - Regions Shipments - \$

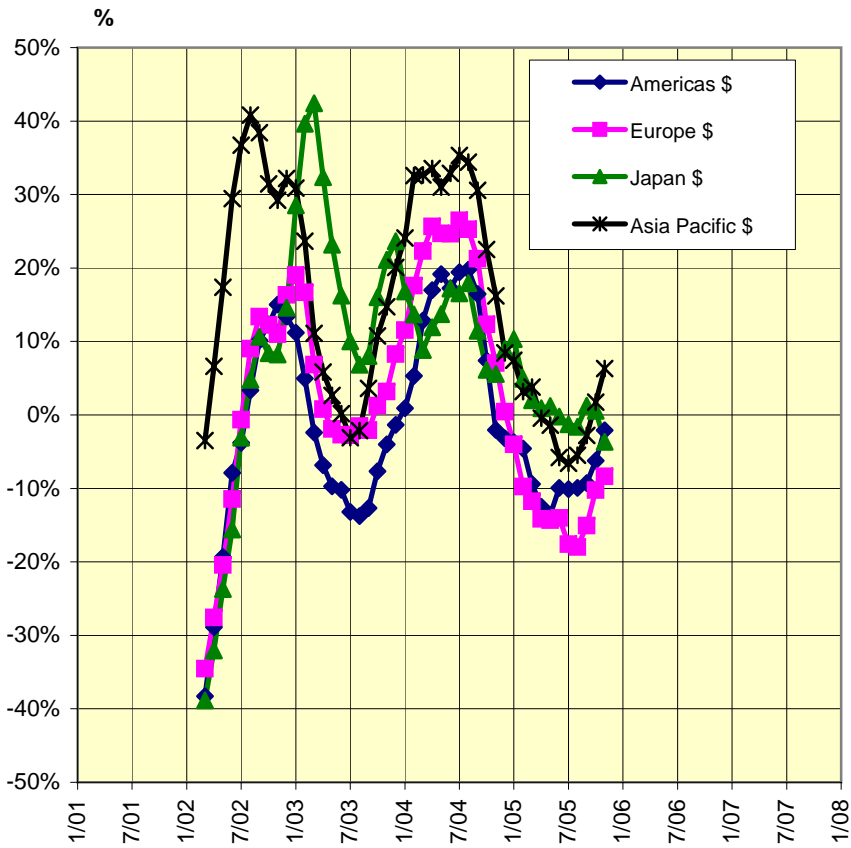


4. Discrete Total - Regions Shipments - Units

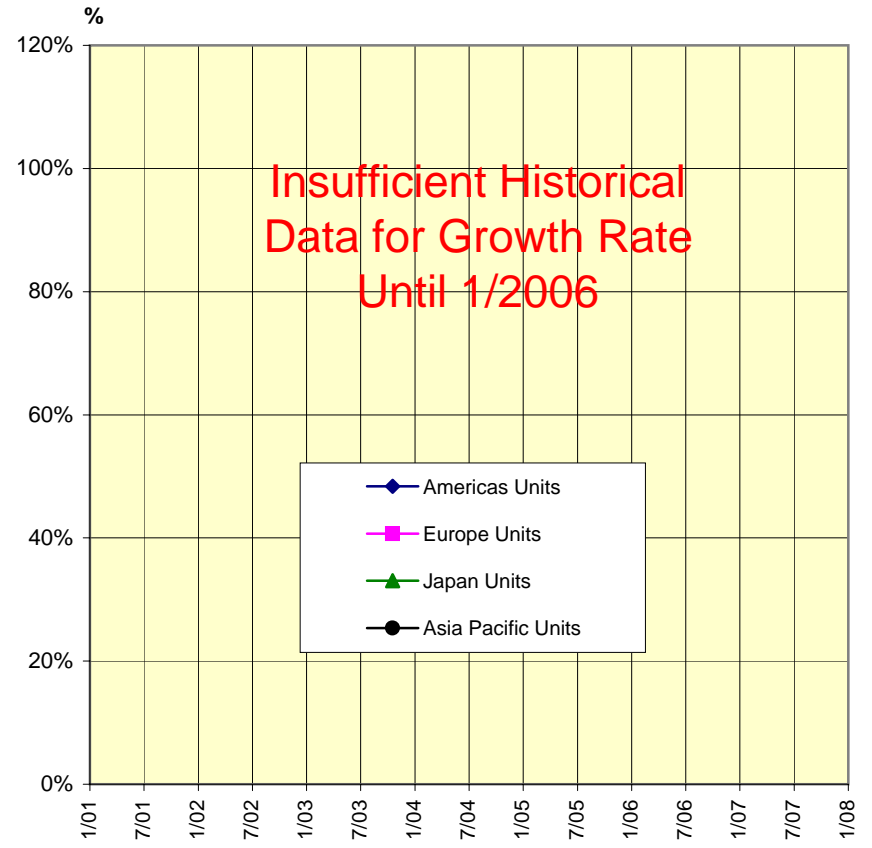


Source: Analyses by Advanced Forecasting Inc.

5. Discrete Total - Regions Growth Rate - \$

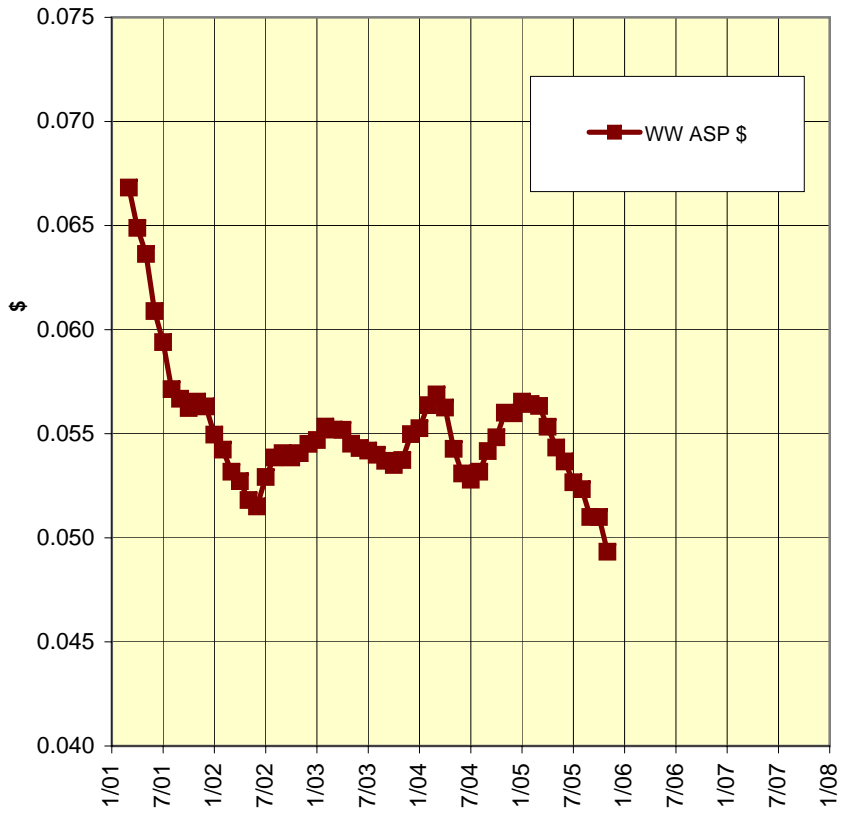


6. Discrete Total - Regions Growth Rate - Units

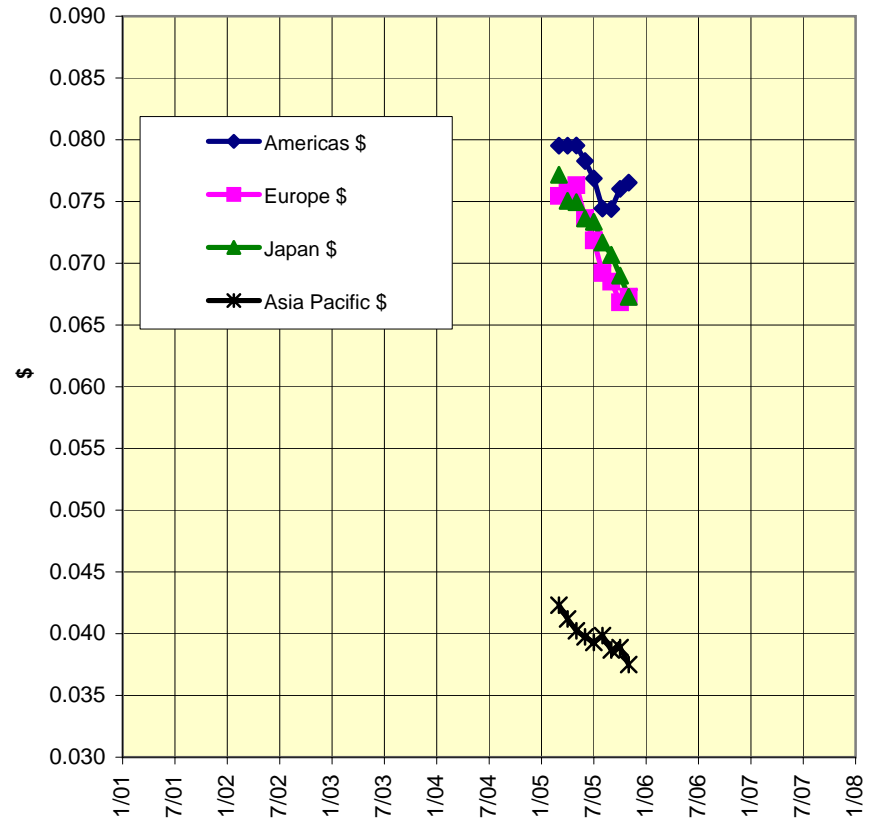


Source: Analyses by Advanced Forecasting Inc.

7. Discrete Total - WW ASP



8. Discrete Total - Regions ASP



Source: Analyses by Advanced Forecasting Inc.

9. Table - Discrete Total Shipments -1/2006

			(3MMA*)	Current Period vs Same Period 1 Year Ago (3MMA*)	Sum of Last 12 Months	Percent Change Y/Y (on sum 12 Months)
Americas	Billions	\$	0.150	-2.11%	1.79	-7.82%
Europe	Billions	\$	0.216	-8.36%	2.52	-12.70%
Japan	Billions	\$	0.322	-3.64%	3.98	0.16%
Asia Pacific	Billions	\$	0.625	6.33%	6.94	0.55%
WW Dollars	Billions	\$	1.312	0.16%	15.24	-3.02%
WW	Billions	Units	26.608	13.95%	287.39	0.52%
WW ASP		\$	0.049	-11.92%		
Americas	Billions	Units	1.956	#N/A	#N/A	#N/A
Europe	Billions	Units	3.207	#N/A	#N/A	#N/A
Japan	Billions	Units	4.789	#N/A	#N/A	#N/A
Asia Pacific	Billions	Units	16.656	#N/A	#N/A	#N/A

* 3MMA = 3 Month Moving Average